



Lansdowne Public School

Fortnightly Newsletter Term 2 Week 2

Tuesday 6th 2025

Dear Parents, Carers and Families

Uniforms

With the weather getting cooler, please make sure your child wears or brings their school jumper, jacket and track pants. Please make sure they have their names written on all items in case they are misplaced.

Hats still need to be worn during winter months. Spare hats are no longer available for students to borrow, so please make sure they have their hat packed every day. Hats can be purchased through the school office for \$10.

Mother's Day Stall

Our Mother's Day stall will be held **tomorrow, Wednesday 7th May**. There will be a variety of gifts on sale that are suitable for mums, nans, aunties etc. All gifts are \$5.00 each, paid online or by cash.

WOW Day

Students in Year 6 who are attending Chatham High next year will be attending WOW Day this **Thursday 8th May**. Permission notes have been emailed.

Zone Cross Country

The Zone Cross Country was postponed due to wet conditions last Friday. We hope the track will be suitable this **Friday 9th May**. Updated permission notes have been emailed to those attending.

RYSTEM Challenge

Year 5/6 have been invited to participate again this year at RYSTEM Science & Engineering Day held at Chatham High School on **Tuesday 13th May**. Permission notes will be emailed this week with more information.

Athletics Carnival

Our school athletics carnival is planned for **Thursday 15th May**. This date may have to change if the weather does not allow our grounds to dry out.

Students may wear their house colours. Parents and carers are welcome to come along and cheer on their children. The carnival will begin at 9.30am.

Walk Safely to School Day

On **Friday 16th May** staff and students will be walking around the village, picking up students along the way. We will leave the school once the school bus arrives at approx. 8.45am and head east along Macquarie Street, onto Moto Street, then along Central Lansdowne Road until we get to Yurong Street and back to Macquarie Street, arriving back to school at approx. 9.10am. *Students tend to end up with wet socks and shoes and may require a back up set to change into.*

There will be a staff member at school for students arriving during this time or those who do not want to participate. Parents/carers are welcome to join us on the walk.

GRIP Leadership Conference

Year 6 will head to Forster on **Tuesday 20th May** for the GRIP Leadership Conference with Mrs Dun. This is a great opportunity for our leaders to mix with leaders from other schools and participate in interactive activities, discussions, leadership games and more. Permission notes will be emailed out this week.

Fence

Work has been delayed on the new security fencing due to wet weather. It is expected that work will begin by the end of the week.

Construction at the front entry of the school is planned to take place outside of school hours to minimise disruption to student learning.

Kindergarten 2026

We will be commencing our Kindergarten transition program, Lansdowne Little Learners, for students starting Kindergarten in 2026 next term.

Continued page 2...

If you know of any child starting school next year or have any questions about enrolling your child for next year please contact the school on 6556 7147 or drop into the office.

Lansdowne Art Exhibition

Students and community members are invited to enter the 2025 Lansdowne Art Exhibition.

Entry for students is \$2.

The exhibition will be held on Saturday 31st May and Sunday 1st June at the Lansdowne Community Hall.

Further information and entry forms are available at the school office. **Entries close 5pm Friday 16th May.**

Term 2 Attendance and Engagement

This term we will continue to target attendance and engagement by providing interest-based activities throughout the week.

We will have another attendance draw for students this term, as well as a draw for our parents who explain their child's absences.



Congratulations to Apollo, Elsie, Xavier, Ciara, Mason & Rose who were the lucky six students drawn to receive a \$5 canteen voucher each.

Cathy Dun
Relieving Principal

Term 2 Student Attendance Draw

\$5 Canteen Vouchers up for grabs!

Each week, students who attend school every day will receive an entry into the draw.

10 full weeks = 10 entries!

8 full weeks = 8 entries and so on.

At the end of the term, six tickets will be drawn for a \$5 canteen voucher.

Term 2 Family Draw

\$30 Meat Vouchers up for grabs!

During Term 2, parents/carers who provide an explanation for their child's absences will receive an entry into the draw.

1 entry for every explained absence!

At the end of the term, one lucky family will be drawn for the \$30 meat voucher.

Monday	Canteen
Tuesday	Music Signing Choir
Wednesday	Pottery Tinker Club
Thursday	Busy Bees
Friday	Gymnastics Cooking

Easter Winners

Raffle Winners:

- 1st—C. Hills
- 2nd—C. Muir
- 3rd— R. Haddow
- 4th—A. Hardes
- 5th—J. O'Reilly
- 6th—A. Uelwer
- 7th—A. Dennes
- 8th—X. Sheridan
- 9th—B. Greene
- 10th—R. Van Ewyle

Student Prize Winners:

Cassie & Alice

Guessing Competition Winner:

Cassie



KINDERGARTEN 2026

DO YOU KNOW SOMEONE STARTING KINDERGARTEN IN 2026?

If you know of any children in our community that will be beginning school next year please ask them to contact the school on 6556 7147.



Our *Little Learners* Kindergarten Transition Program will begin in Term 3. Enrolment forms can be completed now online through the school website.

Newsletter Competition — Term 2 Week 2

Student name/s: _____

- ♦ What was the attendance prize for Term 1? _____
- ♦ How much are the Mother's Day Gifts? _____
- ♦ When is Issue 3 Book Club Orders Due? _____
- ♦ When does Circle of Security Parenting Program Begin? _____
- ♦ How much do the School Jackets cost? _____
- ♦ Who is holding the carrot? _____

Return the completed question sheet to the school office by **Friday 9th May** to go into the Term 2 Draw. **One entry per family!**

Congratulations to Cassie who won the Prize for Term 1.





**Communities
for Children**

Child Care Services Taree & Districts Inc.

Presents

Circle of Security Parenting

A relationship-based program to support parents build positive and secure attachments with their children. The program aims to build the bond and sense of security for both the parent/carer and child in their relationship by:

- demonstrating how to understand their children's needs.
- how parents own experiences impacts on how they parent.

The program will be presented over 4 sessions.

Morning tea will be provided.

Where: Lansdowne Public School, 16 Macquarie Street, Lansdowne

When: Friday 16th May 9 am to 11am

Friday 23rd May 9am to 11am

Friday 30th May 9am to 11am

Friday 6th June 9am to 11am

For information and to register call

Lansdowne Public School - 65567147

Secure your spot now!

If you have booked your place in the program, encourage friends and other parents to join you, the more the better!

SCHOOL CALENDAR

Term 2 — 2025

Week 1	Wednesday 30th April	FIRST DAY OF TERM 2
Week 2	Wednesday 7th May	Mothers Day Stall
Week 2	Thursday 8th May	Yr 6 WOW Day @ CHS
Week 2	Friday 9th May	PSSA Zone Cross Country
Week 3	Tuesday 13th May	Yr 5/6 RYSTEM Challenge @ CHS
Week 3	Wednesday 14th May	Assembly @ 2.30pm
Week 3	Thursday 15th May	School Athletics Carnival
Week 3	Friday 16th May	Walk To School Safely Day
Week 3	Friday 16th May	Book Club Orders Due
Week 3	Friday 16th May	Circle of Security Parenting Program
Week 4	Monday 19th May	Responsible Pet Visit—K12
Week 4	Tuesday 20th May	Yr 6 GRIP Leadership Conference
Week 4	Wednesday 21st May	Simultaneous Storytime
Week 5	Monday 26th May	National Sorry Day
Week 5	Tuesday 27th May	Reconciliation Week Begins
Week 6	Monday 2nd June	Life Education —Healthy Harold Visit
Week 6	Wednesday 4th June	Assembly @ 2.30pm
Week 7	Monday 9th June	King's Birthday—Public Holiday
Week 7	Wednesday 11th June	LDPSSA Athletics Carnival @ Taree
Week 8	Friday 20th June	PSSA Soccer Gala Day
Week 9	Wednesday 25th June	LDPSSA Athletics Carnival <u>Backup Date</u>
Week 9	Wednesday 25th June	Assembly @ 2.30pm — TBC
Week 10	Friday 4th July	LAST DAY OF TERM 2

Uniform Price List 2025

Green Polo Shirts	\$30.00
Green Sports Jacket	\$40.00
Hat	\$10.00

All items are sold at the school office

ISSUE 3 BOOK CLUB ORDERS

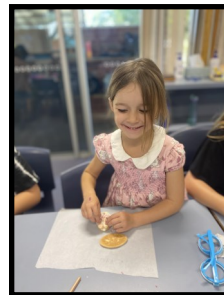
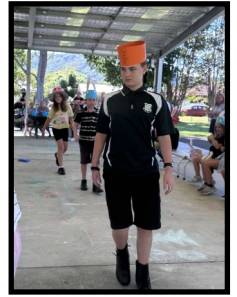
**Due Friday
16th May**



Easter 2025



Easter 2025



School Exclusion Periods

If your child has an infectious condition, you may need to keep them home from day care or school to stop it from spreading. Here's a list of common childhood illnesses and their recommended exclusion periods.



Chickenpox

Until all blisters have dried (usually 5 days).



Colds

No exclusion period.



Conjunctivitis

Until discharge (pus) from the eyes has stopped.



COVID-19

If positive COVID-19 test, stay home until acute symptoms go.



Diarrhoea

1 day after the last loose bowel motion (if no cause is identified).



Gastroenteritis

1 day after the last loose bowel motion (if no cause is identified).



Hand, foot and mouth disease

Until all blisters have dried.



Head lice

No exclusion period (as long as effective treatment has started).



Impetigo

Until 48 hours after treatment or once sores have dried and healed.



Influenza (flu)

Until well.



Measles

At least 4 days after the first rash.



Mumps

9 days or until the swelling goes down.



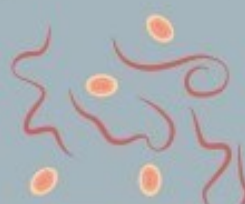
Rubella

At least 4 days after the first rash or until they have recovered fully.



Scabies

1 day after appropriate treatment has started.



Threadworms

No exclusion period.



Whooping cough

5 days after antibiotics started, or 21 days from the first cough.